

3" / 5" / 7" E-Z-Go Lift Kits (2 passenger)

Fits Years 06/2001-1994

Note: This is a bolt-on lift kit. Offset wheels are recommended.

-FRONT LIFT Instructions-

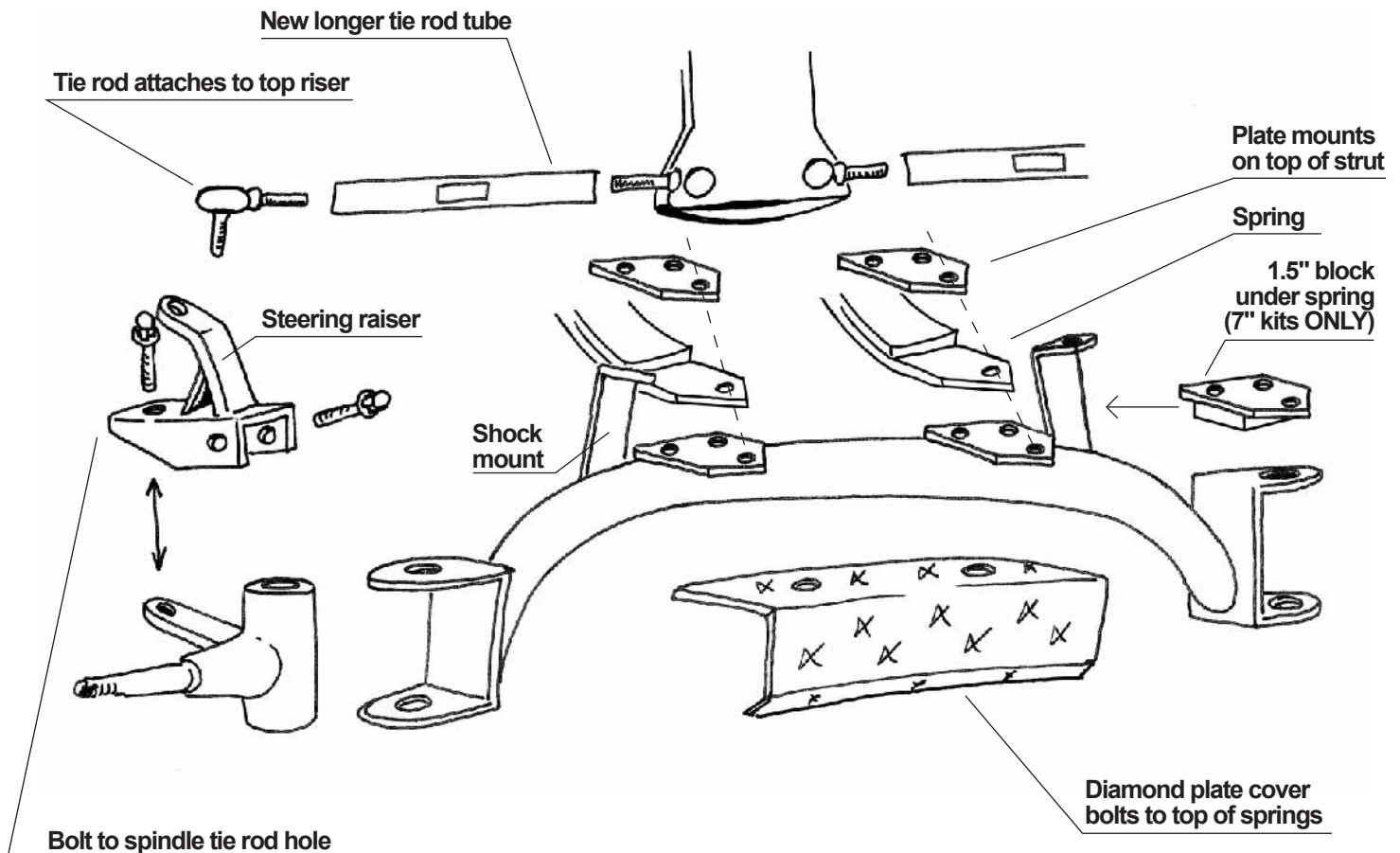
Jack-up the front of the cart and place it on jack stands. Remove the wheels, tires & tie rod joints from the spindles. Remove the spindles from the front axle. Clean and lubricate these king pin bolts for the reinstallation of the spindles. Take shock loose from axle. Remove the front axle from the leaf springs. Install new axle and spindles. Install steering riser to the top of the spindle arms using provided hardware. Re-attach the tie rod joints w/ new tie rod tubes to the spindle raisers. Mount diamond plate cover to front spring bolts.

Now you are ready for adjustments:
Mount tires. Lower cart to the ground. Push cart back & forth to get suspension to seat.
Adjust toe in 1/8" (Use straight edge on side of tires, measure from behind of tire & then adjust 1/8" in on front of tire.

NOTE: Drive cart around then check adjustments. Repeat adjustments if necessary.



NOTE: 3" kits, springs on bottom of axle / 5" & 7" kits, springs on top of axle



DISCLAIMER: All lift kit or accessory installations should only be performed by professional mechanics. The lift kit buyer assumes sole responsibility for, and shall indemnify the dealer/retailer, from any and all liability, claim, responsibility, and damage, or any costs or expenses resulting from any loss of life or injuries or claimed injuries to persons or property that may be sustained in connection with the use of any product before or after purchase, including but not limited to lift kits. Dealer/retailer reserves the right, at any time, to discontinue or change prices, specifications, features, designs, models or equipment without further notice and without incurring any further obligations.