

6" Club Car Spindle Lift Kit (gas & electric)

Fits Years 1984 - 2005

Note: This is a bolt-on lift kit. Offset wheels are recommended

-FRONT LIFT Instructions-

SPINDLES

Raise front of car & support frame with jack stands. Remove front wheel & wheel hubs. Remove tie-rods. Remove and discard factory spindles. Install new spindles & reassemble tie-rods & wheel hubs. Leave bolts loose at spring ends for camber adjustment.

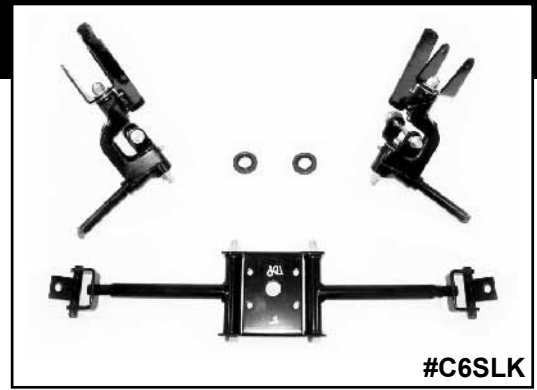
STRUT KIT

Remove spring mount bolts & install strut w/ new hardware. (Make sure "F" faces front of car). Remove nyloc nut & washer from bottom of spindle. Install end of strut yoke on bottom of spindle bolt. Install nyloc nut. Tighten bolts & nuts.

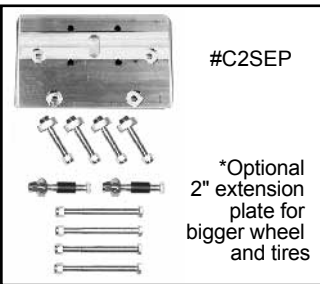
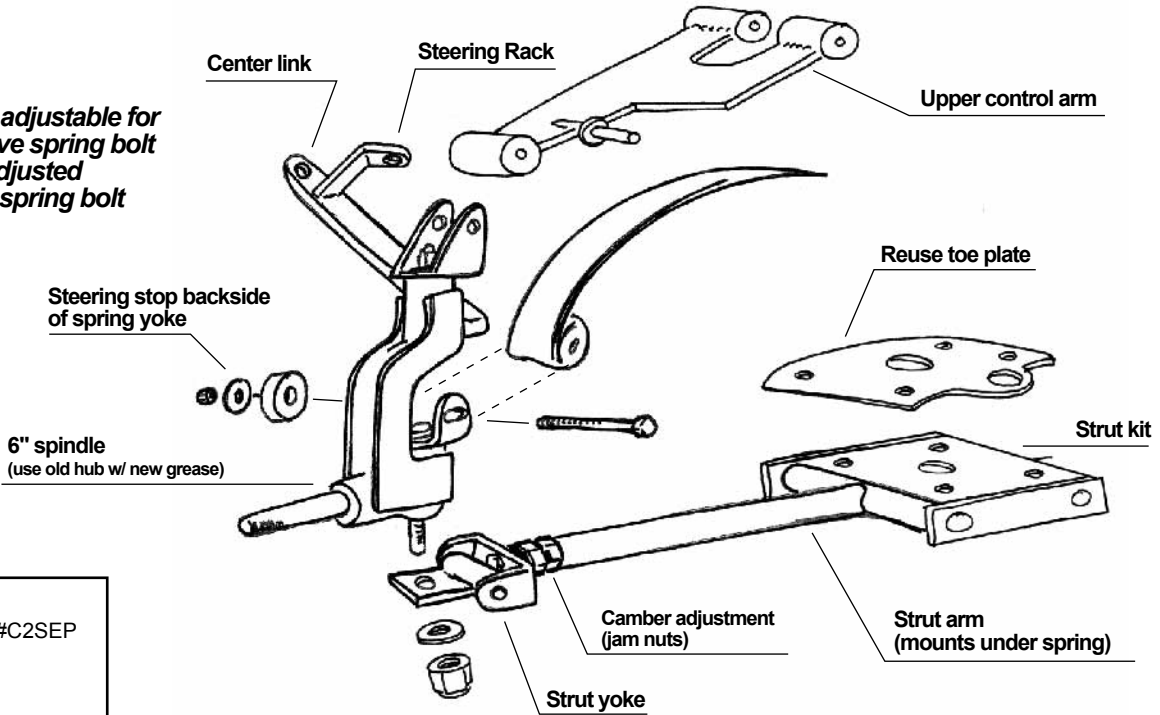
Now you are ready for adjustments:

Mount tires. Lower cart to the ground. Push cart back & forth to get suspension to seat. Adjust camber using 2" square on side of tire to floor. 1/4" gap in at bottom. This is done by adjusting 3/4" bolt in end of strut tube & tighten jam nuts. Tighten spring bolts w/ steering stop. Adjust toe in 1/8" (Use straight edge on side of tires, measure back & then adjust 1/8" in on front. Adjust center eccentric bolt in spring for even side to side if necessary.

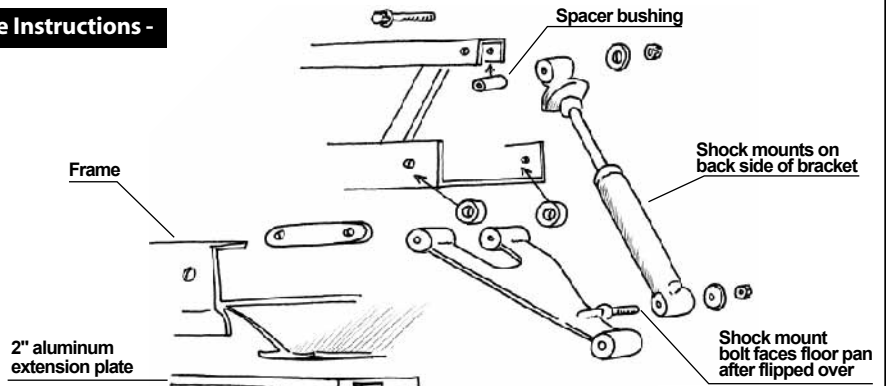
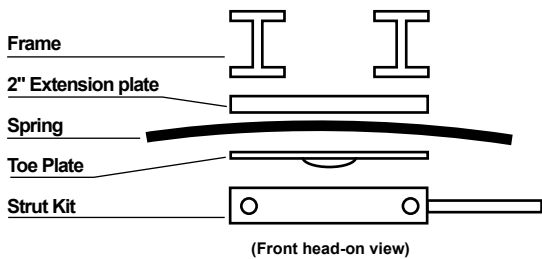
NOTE: Drive cart around then check adjustments. Repeat adjustments if necessary.



NOTE: Strut adjustable for camber. Leave spring bolt loose until adjusted then tighten spring bolt



- 2" Extension Plate Instructions -



DISCLAIMER: All lift kit or accessory installations should only be performed by professional mechanics. The lift kit buyer assumes sole responsibility for, and shall indemnify the dealer/retailer, from any and all liability, claim, responsibility, and damage, or any costs or expenses resulting from any loss of life or injuries or claimed injuries to persons or property that may be sustained in connection with the use of any product before or after purchase, including but not limited to lift kits. Dealer/retailer reserves the right, at any time, to discontinue or change prices, specifications, features, designs, models or equipment without further notice and without incurring any further obligations.